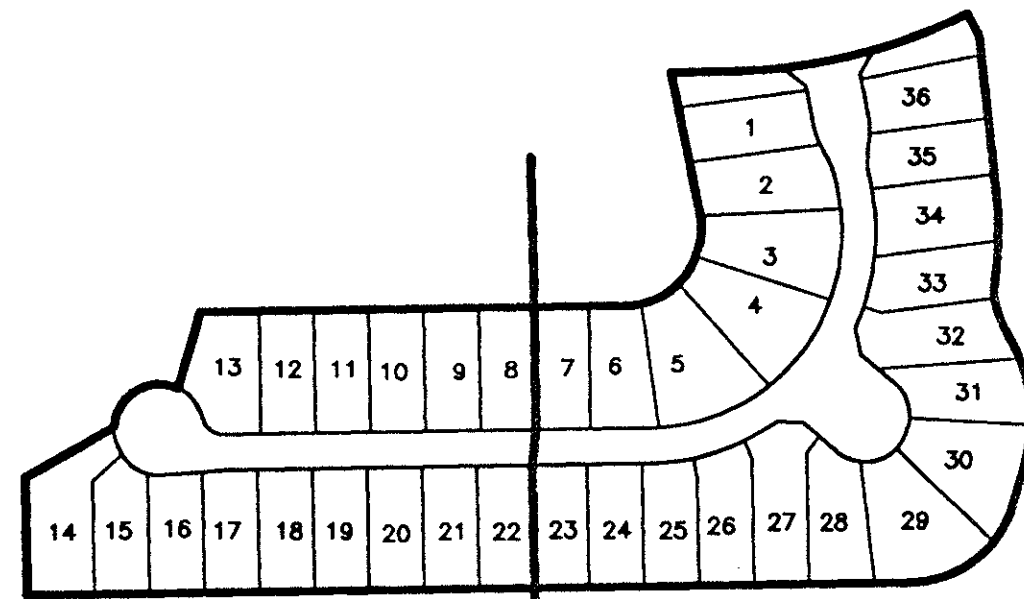


ADDISON RESERVE PARCEL SIXTEEN

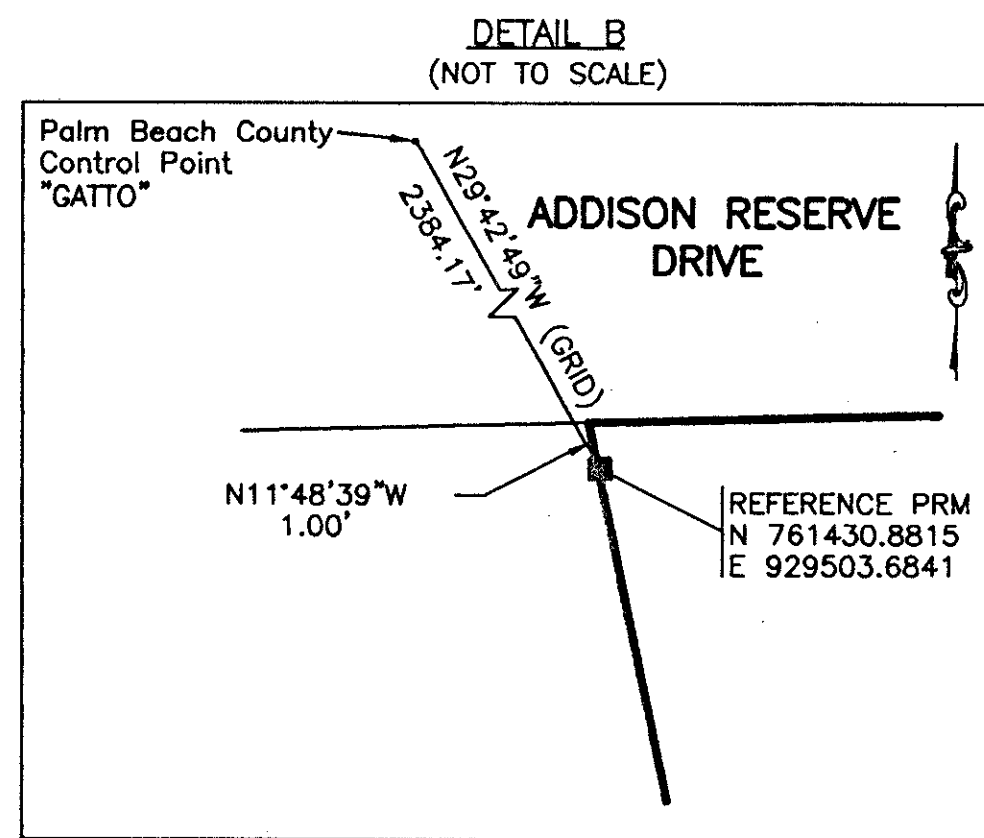
PART OF GLENEAGLES/POLO CLUB WEST P.U.D.
BEING A REPLAT OF TRACT 16
"ADDISON RESERVE PLAT FOUR"
(P.B. 79, PGS. 76-81)

SITUATE IN SECTION 28, TOWNSHIP 46 SOUTH, RANGE 42 EAST
PALM BEACH COUNTY, FLORIDA
MARCH, 1998 SHEET 2 OF 3



SHEET 3 SHEET 2

SHEET LOCATION MAP
NOT TO SCALE



- NOTES:
- THE COORDINATES SHOWN HEREON ARE STATE PLANE GRID COORDINATES ACCORDING TO THE TRANSVERSE MERCATOR PROJECTION OF THE FLORIDA EAST ZONE, N.A.D. 83, PER THE 1990 ADJUSTMENT.
 - THE LINEAR DIMENSIONS SHOWN HEREON ARE GROUND DISTANCES IN U.S. FEET AND DECIMAL PARTS THEREOF.
 - THE GROUND DISTANCE TO GRID DISTANCE SCALE FACTOR IS 1.0000338 (GROUND DISTANCE X SCALE FACTOR = GRID DISTANCE).
 - ALL LINES WHICH INTERSECT CURVES ARE RADIAL TO THOSE CURVES UNLESS OTHERWISE NOTED.

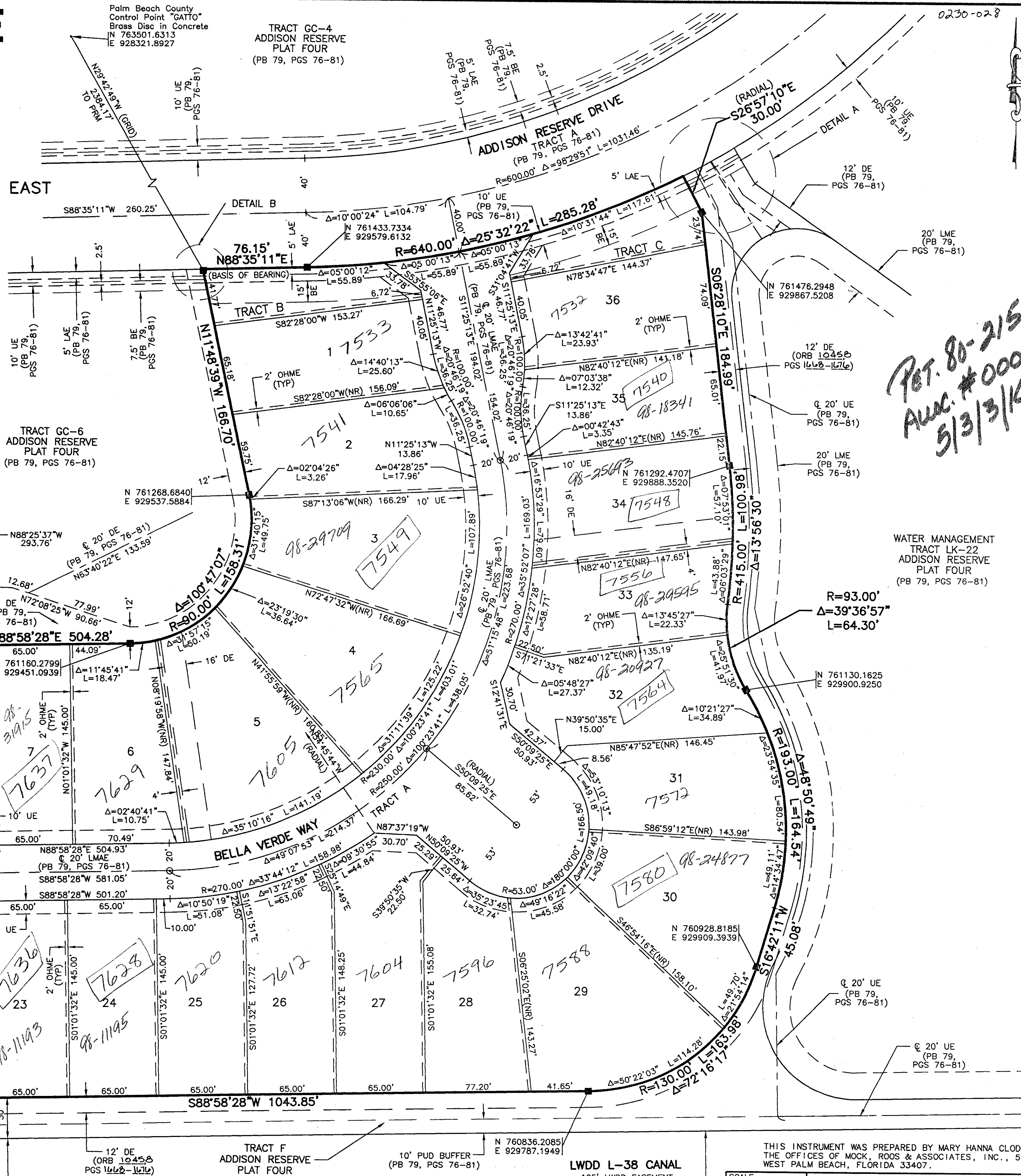
Palm Beach County Control Point "GATTO"
Brass Disc in Concrete
N 763501.6313
E 928321.8927

Palm Beach County Control Point "GAST"
Brass Disc in Concrete
N 763538.3000
E 931357.3500

S89°18'37"W (GRID) 3045.57'

N88°35'11"E (Plat) = 00°00'15" Bearing
N88°35'26"E (Grid) = Clockwise Rotation
(Plat to Grid)

NORTHEAST LINE
TRACT 16
ADDISON RESERVE PLAT FOUR
PB 79, PGS 76-81



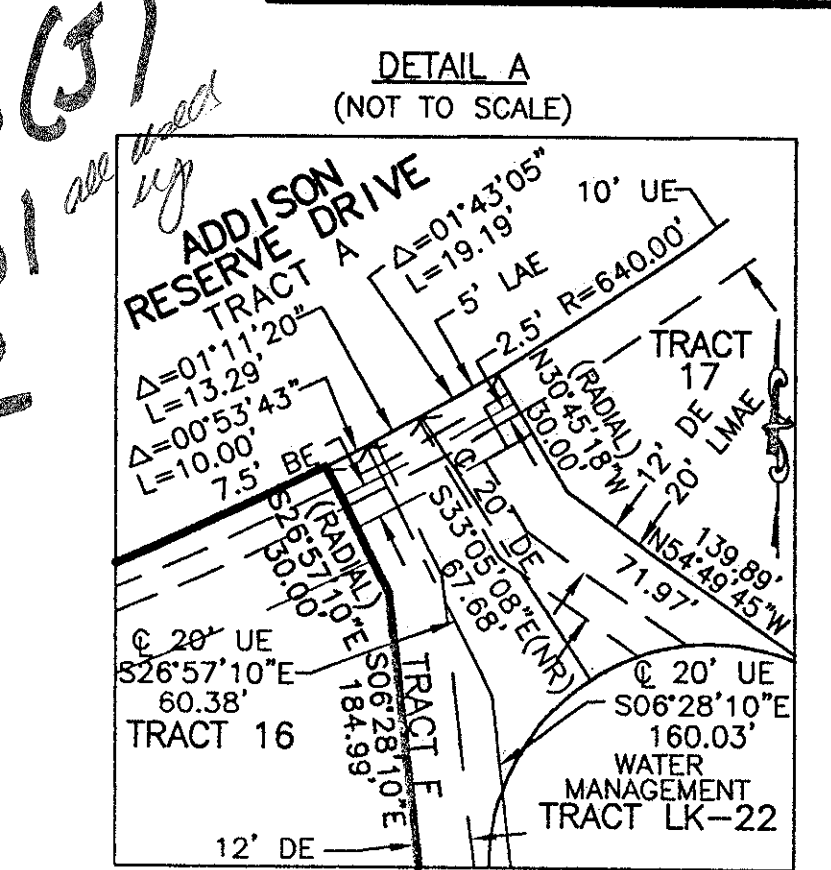
0230-028

STATE OF FLORIDA
COUNTY OF PALM BEACH

THIS PLAT WAS FILED FOR
RECORD _____
THIS _____ DAY OF _____
AD, 1998 AND DULY RECORDED
IN PLAT BOOK _____ ON PAGES
_____ AND _____

DOROTHY H. WILKEN, CLERK
BY: _____, D.C.

CIRCUIT COURT SEAL



- LEGEND
- BE BUFFER EASEMENT
 - Δ CENTRAL (DELTA) ANGLE
 - DE DRAINAGE EASEMENT
 - FPL FLORIDA POWER & LIGHT
 - L ARC LENGTH
 - LAE LIMITED ACCESS EASEMENT
 - LE LANDSCAPE EASEMENT
 - LME LAKE MAINTENANCE EASEMENT
 - LMVAE LAKE MAINTENANCE ACCESS EASEMENT
 - LWDD LAKE WORTH DRAINAGE DISTRICT
 - (NR) NON-RADIAL
 - OHME OVERHANG AND MAINTENANCE EASEMENT
 - ORB OFFICIAL RECORD BOOK
 - PB PLAT BOOK
 - PG(S) PAGE(S)
 - PUD PLANNED UNIT DEVELOPMENT
 - R RADIUS
 - (TYP) TYPICAL
 - UE UTILITY EASEMENT
 - PERMANENT REFERENCE MONUMENT
FOUND PLS# 4763
 - PERMANENT REFERENCE MONUMENT
SET PLS# 4763
 - PERMANENT CONTROL POINT
SET PLS# 4763
 - ⊙ CENTERLINE

*Pet. 80-215(3)
A.W.C. #0001
5/3/98*

WATER MANAGEMENT
TRACT LK-22
ADDISON RESERVE
PLAT FOUR
(PB 79, PGS 76-81)

THIS INSTRUMENT WAS PREPARED BY MARY HANNA CLODFELTER, P.S.M. IN
THE OFFICES OF MOCK, ROOS & ASSOCIATES, INC., 5720 CORPORATE WAY,
WEST PALM BEACH, FLORIDA 33407.

SCALE:
1" = 40'
P.A. NO.:
94182.18
DATE:
MARCH, 1998
DRAWING NO.
46-42-152

MOCK ROOS
ENGINEERS SURVEYORS PLANNERS

5720 Corporate Way, West Palm Beach, Florida 33407
(561) 683-3113, fax 478-7248

**ADDISON RESERVE
PARCEL SIXTEEN**
PART OF GLENEAGLES/POLO CLUB WEST P.U.D.
BEING A REPLAT OF TRACT 16
"ADDISON RESERVE PLAT FOUR"
(P.B. 79, PGS. 76-81)
SITUATE IN SECTION 28, TOWNSHIP 46 SOUTH, RANGE 42 EAST
PALM BEACH COUNTY, FLORIDA

0230-028

83/35

REV: 05-26-98
CAD FILE: